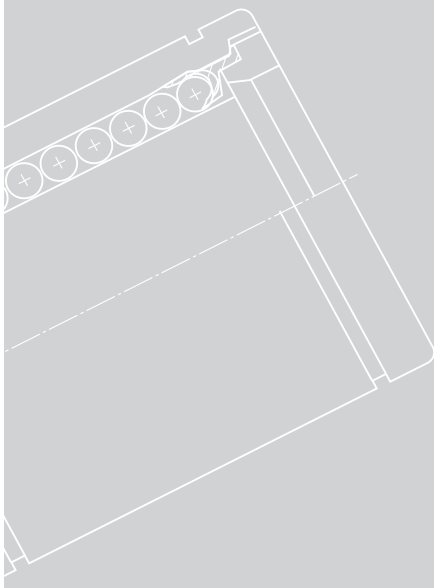


PART B

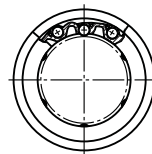
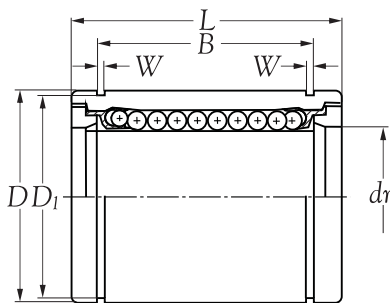
直线轴承

Linear Bearing

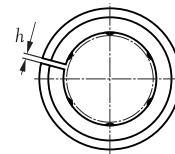




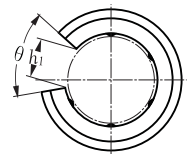
STANDARD TYPE



LM



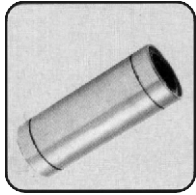
LM..AJ



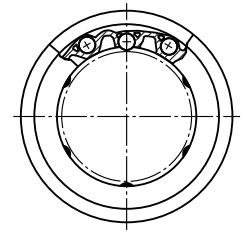
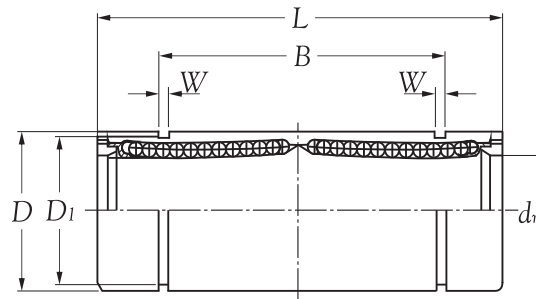
LM..OP

Inner bore d mm	Bearing number			Number of ball tracks	Principal dimensions					
	standard resin retainer	standard resin retainer	standard resin retainer		dr tolerance mm	D tolerance mm		L tolerance mm		
						0.001mm	0.001mm	0.001mm	0.001mm	
5	LM 5 UU	LM 5 UU-AJ	LM 5 UU-OP	4	5	(0/-8)	10	(0/-9)	15	(0/-0.12)
6	LM 6 UU	LM 6 UU-AJ	LM 6 UU-OP	4	6	(0/-9)	12	(0/-11)	19	(0/-0.2)
8S	LM 8S UU	LM 8S UU-AJ	LM 8S UU-OP	4	8	(0/-9)	15	(0/-11)	17	(0/-0.2)
8	LM 8 UU	LM 8 UU-AJ	LM 8 UU-OP	4	8	(0/-9)	15	(0/-11)	24	(0/-0.2)
10	LM 10 UU	LM 10 UU-AJ	LM 10 UU-OP	4	10	(0/-9)	19	(0/-13)	29	(0/-0.2)
12	LM 12 UU	LM 12 UU-AJ	LM 12 UU-OP	4	12	(0/-9)	21	(0/-13)	30	(0/-0.2)
13	LM 13 UU	LM 13 UU-AJ	LM 13 UU-OP	4	13	(0/-9)	23	(0/-13)	32	(0/-0.2)
16	LM 16 UU	LM 16 UU-AJ	LM 16 UU-OP	5	16	(0/-9)	28	(0/-13)	37	(0/-0.2)
20	LM 20 UU	LM 20 UU-AJ	LM 20 UU-OP	5	20	(0/-10)	32	(0/-16)	42	(0/-0.2)
25	LM 25 UU	LM 25 UU-AJ	LM 25 UU-OP	6	25	(0/-10)	40	(0/-16)	59	(0/-0.3)
30	LM 30 UU	LM 30 UU-AJ	LM 30 UU-OP	6	30	(0/-10)	45	(0/-16)	64	(0/-0.3)
35	LM 35 UU	LM 35 UU-AJ	LM 35 UU-OP	6	35	(0/-12)	52	(0/-19)	70	(0/-0.3)
40	LM 40 UU	LM 40 UU-AJ	LM 40 UU-OP	6	40	(0/-12)	60	(0/-19)	80	(0/-0.3)
50	LM 50 UU	LM 50 UU-AJ	LM 50 UU-OP	6	50	(0/-12)	80	(0/-19)	100	(0/-0.3)
60	LM 60 UU	LM 60 UU-AJ	LM 60 UU-OP	6	60	(0/-15)	90	(0/-22)	110	(0/-0.3)

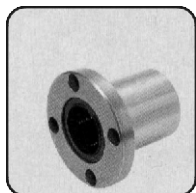
Inner bore d mm	Principal dimensions							Roundness 0.001mm	Steel retainer maximum radial clearance 0.001mm	Load ratings		Weight kg
	B tolerance	W	D_1	h	h_1	θ	dynamic			static		
		mm								C	C ₀	
									N			
5	10.2 (0/-0.2)	1.10	9.6	-	-	-	8	-3	17	21	0.0040	
6	13.5 (0/-0.2)	1.10	11.5	1.0	-	-	12	-5	21	27	0.0080	
8	11.5 (0/-0.2)	1.10	14.3	1.0	-	-	12	-5	18	23	0.0110	
8	17.5 (0/-0.2)	1.10	14.3	1.0	-	-	12	-5	27	41	0.0160	
10	22.0 (0/-0.2)	1.30	18.0	1.0	6.8	80°	12	-5	38	56	0.0300	
12	23.0 (0/-0.2)	1.30	20.0	1.5	8	80°	12	-5	42	61	0.0320	
13	23.0 (0/-0.2)	1.30	22.0	1.5	9	80°	12	-7	52	79	0.0430	
16	26.5 (0/-0.2)	1.60	27.0	1.5	11	80°	12	-7	79	120	0.0690	
20	30.5 (0/-0.2)	1.60	30.5	1.5	11	60°	15	-9	88	140	0.0870	
25	41.0 (0/-0.3)	1.85	38.0	2.0	12.5	60°	15	-9	100	160	0.2200	
30	44.5 (0/-0.3)	1.85	43.0	2.5	15	60°	15	-9	160	220	0.2500	
35	49.5 (0/-0.3)	2.10	49.0	2.5	17.5	60°	20	-13	170	320	0.3900	
40	60.5 (0/-0.3)	2.10	57.0	3.0	20	60°	20	-13	220	410	0.5850	
50	74.0 (0/-0.3)	2.60	76.5	3.0	25	60°	20	-13	390	810	1.5800	
60	85.0 (0/-0.3)	3.15	86.5	3.0	30	60°	25	-16	480	1020	2.0000	



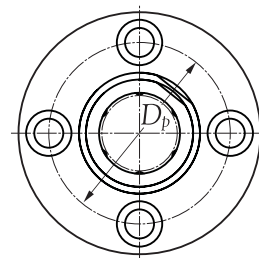
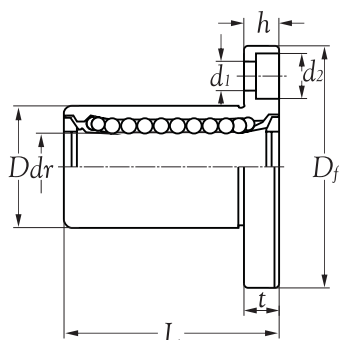
LONG TYPE



Inner bore d_r mm	Bearing number standard resin retainer	Number of ball tracks	Principal dimensions										Eccentricity (MAX.) 0.001mm	Load ratings	
			d_r mm	D		L		B		D_I		W mm		dynamic C	static C ₀ N
				tolerance 0.001mm	mm	tolerance 0.001mm	mm	tolerance mm	mm	tolerance mm	mm				
6	LM 6 L	4	6 (0/-10)	12 (0/-13)	35 (0/-0.30)	27 (0/-0.30)	11.5	1.10	15	33	54				
8	LM 8 L	4	8 (0/-10)	15 (0/-13)	45 (0/-0.30)	35 (0/-0.30)	14.3	1.10	15	44	80				
10	LM 10 L	4	10 (0/-10)	19 (0/-16)	55 (0/-0.30)	44 (0/-0.30)	18.0	1.30	15	60	112				
12	LM 12 L	4	12 (0/-10)	21 (0/-16)	57 (0/-0.30)	46 (0/-0.30)	20.0	1.30	15	83	160				
13	LM 13 L	4	13 (0/-10)	23 (0/-16)	61 (0/-0.30)	46 (0/-0.30)	22.0	1.30	15	83	160				
16	LM 16 L	5	16 (0/-10)	28 (0/-16)	70 (0/-0.30)	53 (0/-0.30)	27.0	1.60	15	126	240				
20	LM 20 L	5	20 (0/-12)	32 (0/-19)	80 (0/-0.30)	61 (0/-0.30)	30.5	1.60	20	143	280				
25	LM 25 L	6	25 (0/-12)	40 (0/-19)	112 (0/-0.40)	82 (0/-0.40)	38.0	1.85	20	159	320				
30	LM 30 L	6	30 (0/-12)	45 (0/-19)	123 (0/-0.40)	89 (0/-0.40)	43.0	1.85	20	254	560				
35	LM 35 L	6	35 (0/-15)	52 (0/-22)	135 (0/-0.40)	99 (0/-0.40)	49.0	2.10	25	270	640				
40	LM 40 L	6	40 (0/-15)	60 (0/-22)	151 (0/-0.40)	121 (0/-0.40)	57.0	2.10	25	350	820				
50	LM 50 L	6	50 (0/-15)	80 (0/-22)	192 (0/-0.40)	148 (0/-0.40)	76.5	2.60	25	620	1622				
60	LM 60 L	6	60 (0/-20)	90 (0/-25)	209 (0/-0.40)	170 (0/-0.40)	86.5	3.15	25	770	2040				

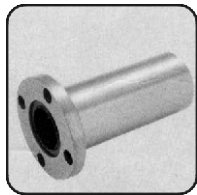


FLANGE TYPE

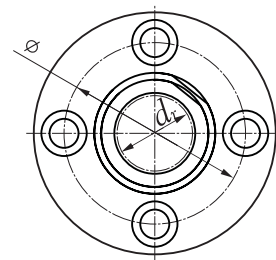
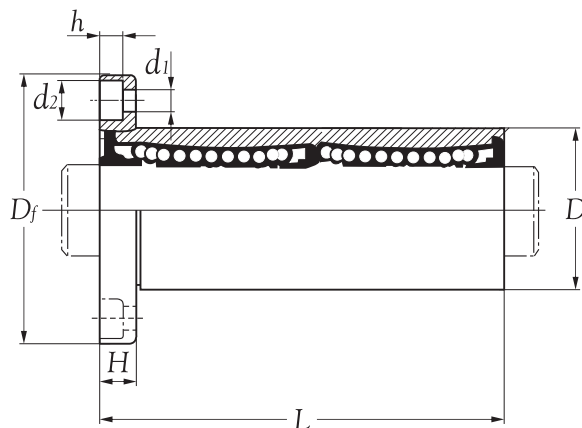


Inner bore d mm	Bearing number with seals resin retainer	Number of ball tracks	Principal dimensions					
			d_r	D		L		
			tolerance mm 0.001mm	tolerance mm 0.001mm	tolerance mm 0.001mm	tolerance mm 0.001mm	tolerance mm 0.001mm	tolerance mm 0.001mm
6	LMF 6 UU	4	6 (0/-9)	12 (0/-11)	19 (0/-0.20)			
8	LMF 8 UU	4	8 (0/-9)	15 (0/-11)	24 (0/-0.20)			
10	LMF 10 UU	4	10 (0/-9)	19 (0/-13)	29 (0/-0.20)			
12	LMF 12 UU	4	12 (0/-9)	21 (0/-13)	30 (0/-0.20)			
16	LMF 16 UU	5	16 (0/-9)	28 (0/-13)	37 (0/-0.20)			
20	LMF 20 UU	5	20 (0/-10)	32 (0/-16)	42 (0/-0.20)			
25	LMF 25 UU	6	25 (0/-10)	40 (0/-16)	59 (0/-0.30)			
30	LMF 30 UU	6	30 (0/-10)	45 (0/-16)	64 (0/-0.30)			
35	LMF 35 UU	6	35 (0/-12)	52 (0/-19)	70 (0/-0.30)			
40	LMF 40 UU	6	40 (0/-12)	60 (0/-19)	80 (0/-0.30)			
50	LMF 50 UU	6	50 (0/-12)	80 (0/-19)	100 (0/-0.30)			
60	LMF 60 UU	6	60 (0/-15)	90 (0/-22)	110 (0/-0.30)			

Inner bore d mm	Principal dimensions flange				Roundness 0.001mm	Squareness 0.001mm	Load ratings	
	D_f	t	D_p	$d_1 \times d_2 \times h$			dynamic C	static C ₀
	mm	mm	mm	mm			N	
6	28	5	20	3.5 x 6.0 x 3.1	12	12	21	27
8	32	5	24	3.5 x 6.0 x 3.1	12	12	28	40
10	40	6	29	4.5 x 7.5 x 4.1	12	12	38	56
12	42	6	32	4.5 x 7.5 x 4.1	12	12	52	80
16	48	6	38	4.5 x 7.5 x 4.1	12	12	79	120
20	54	8	43	5.5 x 9.0 x 5.1	15	15	90	140
25	62	8	54	5.5 x 9.0 x 5.1	15	15	100	160
30	74	10	60	6.6 x 11 x 6.1	15	15	160	280
35	82	10	67	6.6 x 11 x 6.1	20	20	170	320
40	96	13	78	9.0 x 14 x 8.1	20	20	220	410
50	116	13	98	9.0 x 14 x 8.1	20	20	390	810
60	134	18	112	11.0 x 17.5 x 10.8	25	25	480	1020

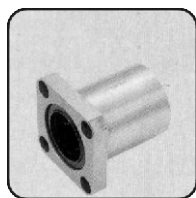


FLANGE LONE TYPE

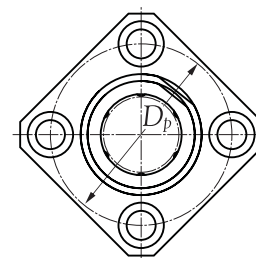
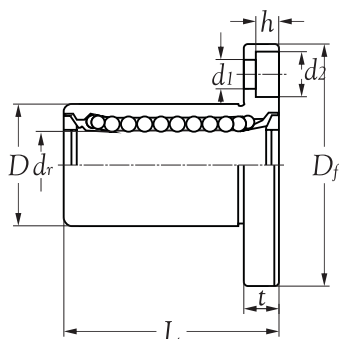


Inner bore d_r mm	Bearing number standard resin retainer	Number of ball tracks	Principal dimensions					
			d_r	D		L		
			mm	tolerance 0.001mm	mm	tolerance 0.001mm	mm	tolerance mm
6	LMF 6 L	4	6	(0/-10)	12	(0/-13)	35	(0/-0.30)
8	LMF 8 L	4	8	(0/-10)	15	(0/-13)	45	(0/-0.30)
10	LMF 10 L	4	10	(0/-10)	19	(0/-16)	55	(0/-0.30)
12	LMF 12 L	4	12	(0/-10)	21	(0/-16)	57	(0/-0.30)
13	LMF 13 L	4	13	(0/-10)	23	(0/-16)	61	(0/-0.30)
16	LMF 16 L	5	16	(0/-10)	28	(0/-16)	70	(0/-0.30)
20	LMF 20 L	5	20	(0/-12)	32	(0/-19)	80	(0/-0.30)
25	LMF 25 L	6	25	(0/-12)	40	(0/-19)	112	(0/-0.40)
30	LMF 30 L	6	30	(0/-12)	45	(0/-19)	123	(0/-0.40)
35	LMF 35 L	6	35	(0/-15)	52	(0/-22)	135	(0/-0.40)
40	LMF 40 L	6	40	(0/-15)	60	(0/-22)	151	(0/-0.40)
50	LMF 50 L	6	50	(0/-15)	80	(0/-22)	192	(0/-0.40)
60	LMF 60 L	6	60	(0/-20)	90	(0/-25)	209	(0/-0.40)

Inner bore d_r mm	Principal dimensions flange						Roundness 0.001mm	Squareness 0.001mm	Load ratings	
	D_f	H	ϕ	d_1	d_2	h			dynamic C	static C_0
	mm	mm	mm	mm	mm	mm			N	
6	28	5	20	3.5	6.0	3.1	15	15	33	54
8	32	5	24	3.5	6.0	3.1	15	15	44	80
10	40	6	29	4.5	7.5	4.1	15	15	60	112
12	42	6	32	4.5	7.5	4.1	15	15	83	160
13	43	6	33	4.5	7.5	4.1	15	15	83	160
16	48	6	38	4.5	7.5	4.1	15	15	126	240
20	54	8	43	5.5	9.0	5.1	20	20	143	280
25	62	8	51	5.5	9.0	5.1	20	20	159	320
30	74	10	60	6.6	11.0	6.1	20	20	254	560
35	82	10	67	6.6	11.0	6.1	25	25	270	640
40	96	13	78	9.0	14.0	8.1	25	25	350	820
50	116	13	98	9.0	14.0	8.1	25	25	620	1622
60	134	18	112	11.0	17.5	10.8	25	25	770	2040

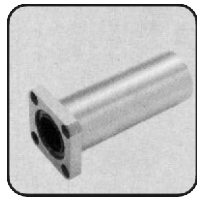


FLANGE TYPE

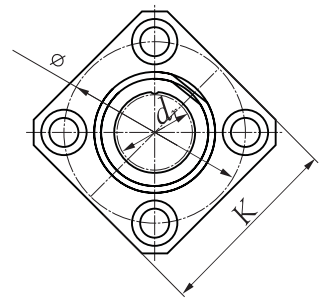
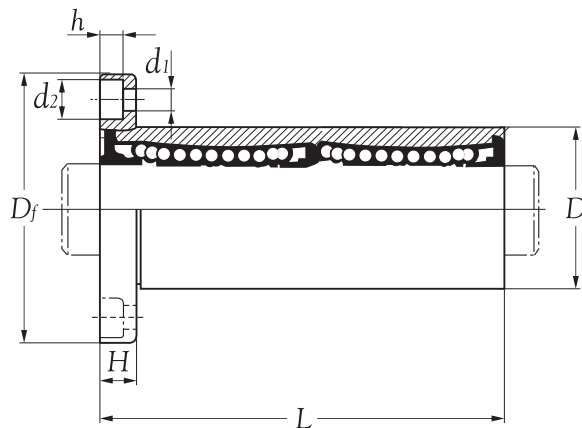


Inner bore d mm	Bearing number with seals resin retainer	Number of ball tracks	Principal dimensions					
			d_r	D		L		
			tolerance mm 0.001mm	tolerance mm 0.001mm	tolerance mm 0.001mm	tolerance mm 0.001mm	tolerance mm 0.001mm	tolerance mm 0.001mm
6	LMK 6 UU	4	6 (0/-9)	12 (0/-11)	19 (0/-0.20)			
8	LMK 8 UU	4	8 (0/-9)	15 (0/-11)	24 (0/-0.20)			
10	LMK 10 UU	4	10 (0/-9)	19 (0/-13)	29 (0/-0.20)			
12	LMK 12 UU	4	12 (0/-9)	21 (0/-13)	30 (0/-0.20)			
16	LMK 16 UU	5	16 (0/-9)	28 (0/-13)	37 (0/-0.20)			
20	LMK 20 UU	5	20 (0/-10)	32 (0/-16)	42 (0/-0.20)			
25	LMK 25 UU	6	25 (0/-10)	40 (0/-16)	59 (0/-0.30)			
30	LMK 30 UU	6	30 (0/-10)	45 (0/-16)	64 (0/-0.30)			
35	LMK 35 UU	6	35 (0/-12)	52 (0/-19)	70 (0/-0.30)			
40	LMK 40 UU	6	40 (0/-12)	60 (0/-19)	80 (0/-0.30)			
50	LMK 50 UU	6	50 (0/-12)	80 (0/-19)	100 (0/-0.30)			
60	LMK 60 UU	6	60 (0/-15)	90 (0/-22)	110 (0/-0.30)			

Inner bore d mm	Principal dimensions flange				Roundness 0.001mm	Squareness 0.001mm	Load ratings	
	D_f	t	D_p	$d_1 \times d_2 \times h$			dynamic C	static C ₀
	mm	mm	mm	mm			N	
6	28	5	20	3.5 x 6.0 x 3.1	12	12	21	27
8	32	5	24	3.5 x 6.0 x 3.1	12	12	28	40
10	40	6	29	4.5 x 7.5 x 4.1	12	12	38	56
12	42	6	32	4.5 x 7.5 x 4.1	12	12	52	80
16	48	6	38	4.5 x 7.5 x 4.1	12	12	79	120
20	54	8	43	5.5 x 9.0 x 5.1	15	15	90	140
25	62	8	51	5.5 x 9.0 x 5.1	15	15	100	160
30	74	10	60	6.6 x 11 x 6.1	15	15	160	280
35	82	10	67	6.6 x 11 x 6.1	20	20	170	320
40	96	13	78	9.0 x 14 x 8.1	20	20	220	410
50	116	13	98	9.0 x 14 x 8.1	20	20	390	810
60	134	18	112	11.0 x 17.5 x 10.8	25	25	480	1020

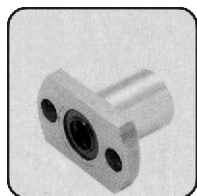


FLANGE LONG TYPE

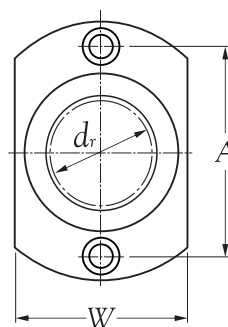
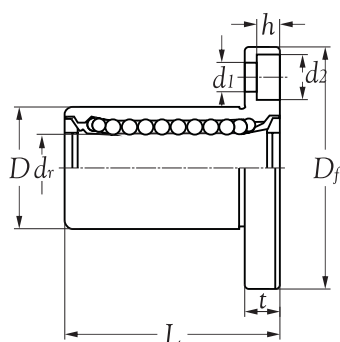


Inner bore d_r mm	Bearing number standard resin retainer	Number of ball tracks	Principal dimensions					
			d_r		D		L	
			mm	tolerance 0.001mm	mm	tolerance 0.001mm	mm	tolerance mm
6	LMK 6 L	4	6	(0/-10)	12	(0/-13)	35	(0/-0.30)
8	LMK 8 L	4	8	(0/-10)	15	(0/-13)	45	(0/-0.30)
10	LMK 10 L	4	10	(0/-10)	19	(0/-16)	55	(0/-0.30)
12	LMK 12 L	4	12	(0/-10)	21	(0/-16)	57	(0/-0.30)
13	LMK 13 L	4	13	(0/-10)	23	(0/-16)	61	(0/-0.30)
16	LMK 16 L	5	16	(0/-10)	28	(0/-16)	70	(0/-0.30)
20	LMK 20 L	5	20	(0/-12)	32	(0/-19)	80	(0/-0.30)
25	LMK 25 L	6	25	(0/-12)	40	(0/-19)	112	(0/-0.40)
30	LMK 30 L	6	30	(0/-12)	45	(0/-19)	123	(0/-0.40)
35	LMK 35 L	6	35	(0/-15)	52	(0/-22)	135	(0/-0.40)
40	LMK 40 L	6	40	(0/-15)	60	(0/-22)	151	(0/-0.40)
50	LMK 50 L	6	50	(0/-15)	80	(0/-22)	192	(0/-0.40)
60	LMK 60 L	6	60	(0/-20)	90	(0/-25)	209	(0/-0.40)

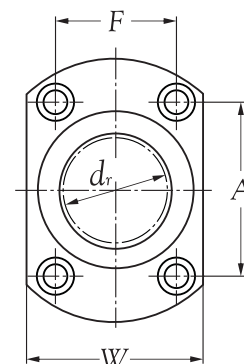
Inner bore d_r mm	Principal dimensions flange							Roundness 0.001mm	Squareness 0.001mm	Load ratings	
	D_f	K	H	ϕ	d_1	d_2	h			dynamic C	static C_0
	mm	mm	mm	mm	mm	mm	mm			N	
6	28	22	5	20	3.5	6.0	3.1	15	15	33	54
8	32	25	5	24	3.5	6.0	3.1	15	15	44	80
10	40	30	6	29	4.5	7.5	4.1	15	15	60	112
12	42	32	6	32	4.5	7.5	4.1	15	15	83	160
13	43	34	6	33	4.5	7.5	4.1	15	15	83	160
16	48	37	6	38	4.5	7.5	4.1	15	15	126	240
20	54	42	8	43	5.5	9.0	5.1	20	20	143	280
25	62	50	8	51	5.5	9.0	5.1	20	20	159	320
30	74	58	10	60	6.6	11.0	6.1	20	20	254	560
35	82	64	10	67	6.6	11.0	6.1	25	25	270	640
40	96	75	13	78	9.0	14.0	8.1	25	25	350	820
50	116	92	13	98	9.0	14.0	8.1	25	25	620	1622
60	134	106	18	112	11.0	17.5	10.8	25	25	770	2040



FLANGE TYPE



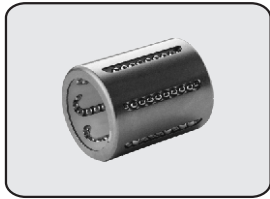
LMT6~13



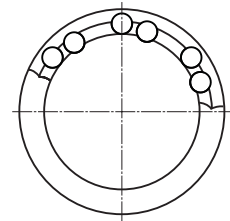
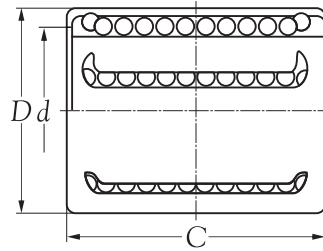
LMT16~30

Inner bore d_r mm	Bearing number with seals resin retainer	Number of ball tracks	Principal dimensions					
			d_r		D		L	
			mm	tolerance	mm	tolerance	mm	tolerance
6	LMT 6 UU	4	6	(0/-9)	12	(0/-11)	19	(0/-0.20)
8	LMT 8 UU	4	8	(0/-9)	15	(0/-11)	24	(0/-0.20)
10	LMT 10 UU	4	10	(0/-9)	19	(0/-13)	29	(0/-0.20)
12	LMT 12 UU	4	12	(0/-9)	21	(0/-13)	30	(0/-0.20)
13	LMT 13 UU	4	13	(0/-9)	23	(0/-13)	32	(0/-0.20)
16	LMT 16 UU	5	16	(0/-9)	28	(0/-13)	37	(0/-0.20)
20	LMT 20 UU	5	20	(0/-10)	32	(0/-16)	42	(0/-0.20)
25	LMT 25 UU	6	25	(0/-10)	40	(0/-16)	59	(0/-0.30)
30	LMT 30 UU	6	30	(0/-10)	45	(0/-16)	64	(0/-0.30)

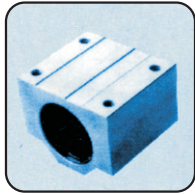
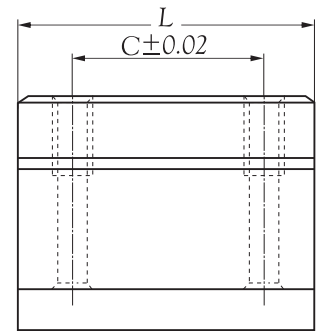
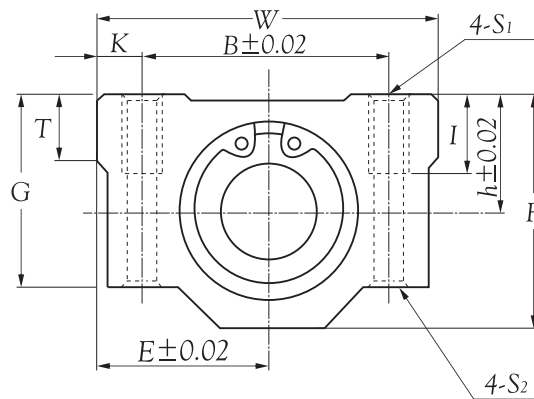
Inner bore d_r mm	Principal dimensions flange						Eccentricity 0.001mm	Squareness 0.001mm	Basic load rating	
	D_f	t	W	A	F	$d_1 \times d_2 \times h$			dynamic C	static C ₀
	mm	mm	mm	mm	mm	mm			N	N
6	28	5	18	20	-	3.5 x 6.0 x 3.1	12	12	21	27
8	32	5	21	24	-	3.5 x 6.0 x 3.1	12	12	27	41
10	40	6	25	29	-	4.5 x 7.5 x 4.1	12	12	38	56
12	42	6	27	32	-	4.5 x 7.5 x 4.1	12	12	42	61
13	43	6	29	33	-	4.5 x 7.5 x 4.1	12	12	52	79
16	48	6	34	31	22	4.5 x 7.5 x 4.1	12	12	79	120
20	54	8	38	36	24	5.5 x 9.0 x 5.1	15	15	88	140
25	62	8	46	40	32	5.5 x 9.0 x 5.1	15	15	100	160
30	74	10	51	49	35	6.6 x 11.0 x 6.1	15	15	160	280



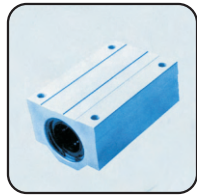
KH TYPE



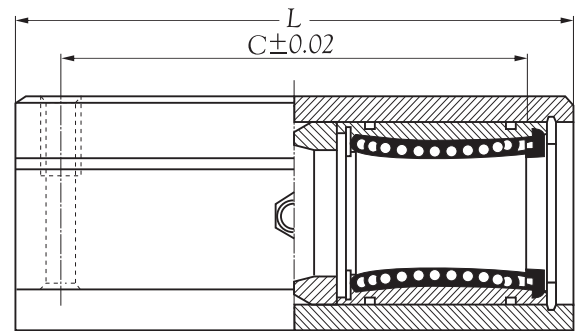
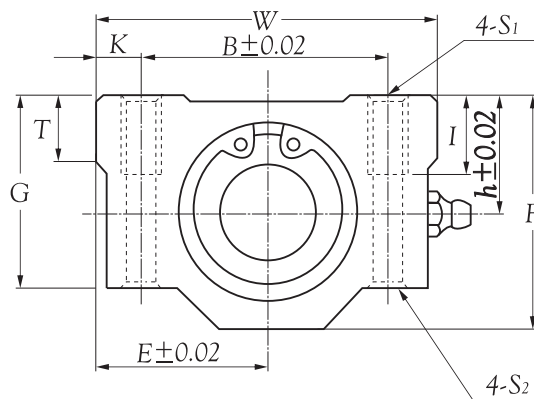
Boundary dimensions <i>d</i> mm	Bearing number	Number of ball tracks	Principal dimensions		Basic load ratings		Max runout speed		Mass kg (approx.)
			<i>D</i>	<i>C</i>	dynamic <i>C</i>	static <i>C_o</i>	grease	oil	
			mm		N		r/min		
6	KH 0622	4	12	22	400	239	41	24	0.0070
8	KH 0824	4	15	24	435	280	44	29	0.0120
10	KH 1026	4	17	26	500	370	51	38	0.0145
12	KH 1228	5	19	28	620	510	63	52	0.0185
14	KH 1428	5	21	28	620	520	63	53	0.0205
16	KH 1630	5	24	30	800	620	82	63	0.0275
20	KH 2030	6	28	30	950	790	97	81	0.0325
25	KH 2540	6	35	40	1990	1670	203	170	0.0660
30	KH 3050	7	40	50	2800	2700	285	275	0.0950
40	KH 4060	8	52	60	4400	4450	449	454	0.1820
50	KH 5070	9	62	70	5500	6300	561	642	0.2520

STANDARD TYPE
LINEAR BLOCK

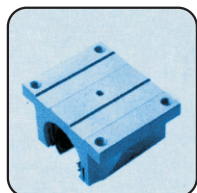
Inner bore d mm	Model No.	Principal dimensions							Mounting dimension					
		h mm	E mm	W mm	L mm	F mm	G mm	T mm	B mm	C mm	K mm	S_1	S_2 mm	I mm
8	SMA 8	11	17	34	30	22.0	18.0	6	24.0	18	5.00	M4	3.4	8
10	SMA 10	13	20	40	35	26.0	21.0	8	28.0	21	6.00	M5	4.3	12
12	SMA 12	15	21	42	36	28.0	24.0	8	30.5	26	5.75	M5	4.3	12
13	SMA 13	15	22	44	39	30.0	24.5	8	33.0	26	5.50	M5	4.3	12
16	SMA 16	19	25	50	44	38.5	32.5	9	36.0	34	7.00	M5	4.3	12
20	SMA 20	21	27	54	50	41.0	35.0	11	40.0	40	7.00	M6	5.2	12
25	SMA 25	26	38	76	67	51.5	42.0	12	54.0	50	11.00	M8	7.0	18
30	SMA 30	30	39	78	72	59.5	49.0	15	58.0	58	10.00	M8	7.0	18
35	SMA 35	34	45	90	80	68.0	54.0	18	70.0	60	10.00	M8	7.0	18
40	SMA 40	40	51	102	90	78.0	62.0	20	80.0	60	11.00	M10	8.7	25
50	SMA 50	52	61	122	110	102.0	80.0	25	100.0	80	11.00	M10	8.7	25
60	SMA 60	58	66	132	122	114.0	94.0	30	108.0	90	12.00	M12	10.7	25



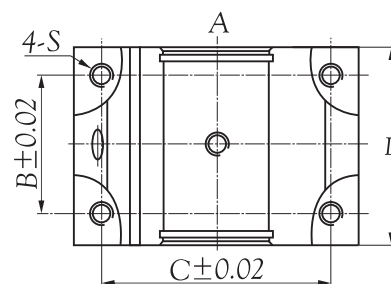
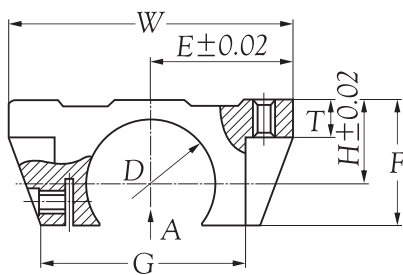
LONG TYPE
LINEAR BLOCK



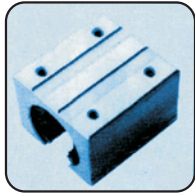
Inner bore d mm	Model No.	Principal dimensions							Mounting dimension					
		h mm	E mm	W mm	L mm	F mm	G mm	T mm	B mm	C mm	K mm	S_1	S_2 mm	I mm
8	SMA 8 L	11	17	34	58	22.0	18.0	6	24.0	42	5.00	M4	3.4	8
10	SMA 10 L	13	20	40	68	26.0	21.0	8	28.0	46	6.00	M5	4.3	12
12	SMA 12 L	15	21	42	70	28.0	24.0	8	30.5	50	5.75	M5	4.3	12
13	SMA 13 L	15	22	44	75	30.0	24.5	8	33.0	50	5.50	M5	4.3	12
16	SMA 16 L	19	25	50	85	38.5	32.5	9	36.0	60	7.00	M5	4.3	12
20	SMA 20 L	21	27	54	96	41.0	35.0	11	40.0	70	7.00	M6	5.2	12
25	SMA 25 L	26	38	76	130	51.5	42.0	12	54.0	100	11.00	M8	7.0	18
30	SMA 30 L	30	39	78	140	59.5	49.0	15	58.0	110	10.00	M8	7.0	18
35	SMA 35 L	34	45	90	155	68.0	54.0	18	70.0	120	10.00	M8	7.0	18
40	SMA 40 L	40	51	102	175	78.0	62.0	20	80.0	140	11.00	M10	8.7	25
50	SMA 50 L	52	61	122	215	102.0	80.0	25	100.0	160	11.00	M10	8.7	25
60	SMA 60 L	58	66	132	240	114.0	94.0	30	108.0	180	12.00	M12	10.7	25



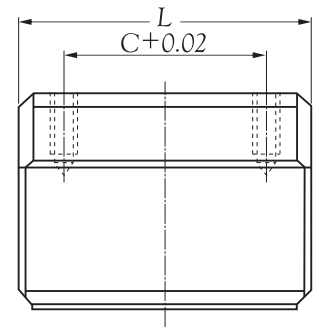
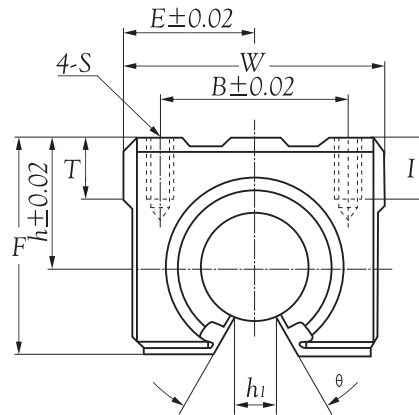
PRELOAD TYPE
LINEAR BLOCK



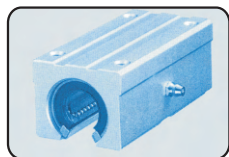
Inner bore d mm	Model No.	Principal dimensions										
		D mm	H mm	E mm	T mm	F mm	G mm	W mm	B mm	C mm	L mm	S
16	TBR 16	28	17.86	31.0	8	27.0	48.0	62	30	50	42	M5
20	TBR 20	32	20.99	34.0	10	31.4	52.4	68	37	54	51	M6
25	TBR 25	40	28.00	41.0	12	41.0	61.0	82	50	65	65	M8
30	TBR 30	45	33.48	45.5	12	48.0	65.0	91	60	75	75	M8



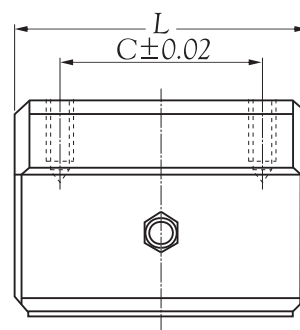
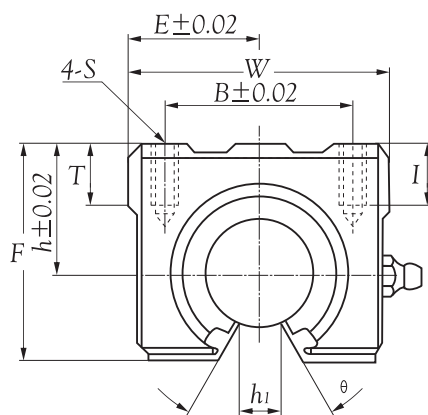
OPEN TYPE
LINEAR BLOCK



Inner bore <i>d</i> mm	Model No.	Main dimensions								Mounting dimension				Basic dynamic load rating	Basic static load rating
		<i>h</i> mm	<i>E</i> mm	<i>W</i> mm	<i>L</i> mm	<i>F</i> mm	<i>T</i> mm	<i>h</i> ₁ mm	θ	<i>B</i> mm	<i>C</i> mm	<i>S</i>	<i>I</i> mm	<i>C</i> (kgf)	<i>C</i> (kgf)
10	SME 10	15	18.0	36	32	24.0	7	6.0	80°	25	20	M5	10	38	56
12	SME 12	17	20.0	40	39	27.6	8	8.5	80°	28	26	M5	10	42	61
13	SME 13	17	20.0	40	39	27.6	8	8.5	80°	28	26	M5	10	52	80
16	SME 16	20	22.5	45	45	33.0	9	10.0	80°	32	30	M5	12	59	91
20	SME 20	23	24.0	48	50	39.0	11	10.0	60°	35	35	M6	12	88	140
25	SME 25	27	30.0	60	65	47.0	14	11.5	50°	40	40	M6	12	100	160
30	SME 30	33	35.0	70	70	56.0	15	14.0	50°	50	50	M8	18	160	280
35	SME 35	37	40.0	80	80	63.0	18	16.0	50°	55	55	M8	18	170	320
40	SME 40	42	45.0	90	90	72.0	20	19.0	50°	65	65	M10	20	220	410
50	SME 50	53	60.0	120	110	92.0	25	23.0	50°	94	80	M10	20	390	810



OPEN LONG TYPE
LINEAR BLOCK

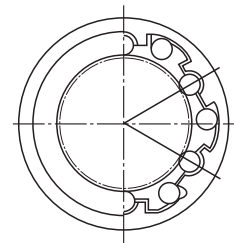
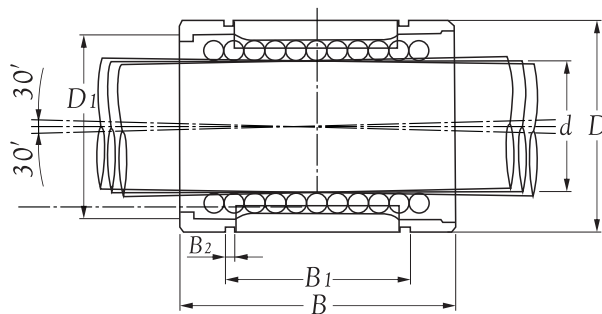


Inner bore d mm	Model No.	Main dimensions								Mounting dimension				Basic dynamic load rating	Basic static load rating
		h mm	E mm	W mm	L mm	F mm	T mm	h_l mm	θ	B mm	C mm	S mm	I mm	$C(kgf)$	$C(kgf)$
16	SME 16 L	20	22.5	45	90	33	9	10.0	80°	32	60	M5	12	158	240
20	SME 20 L	23	24.0	48	100	39	11	10.0	60°	35	70	M6	12	180	280
25	SME 25 L	27	30.0	60	130	47	14	11.5	50°	40	80	M6	12	200	320
30	SME 30 L	33	35.0	70	140	56	15	14.0	50°	50	100	M8	18	320	560

SB: Asian Super Ball Bushing



Closed type



Shaft diameter d mm	Par No.			Dimensions					No. Of Ball rows	Basic Load Ratings	
	without seal	with one seal	with two seals	D	D_1	B mm	B_1	B_2		Dyn. C	Stat. Co
16	SB 16	SB 16U	SB 16UU	28	27.0	37	26.5	1.60	5	125	65
20	SB 20	SB 20U	SB 20UU	32	30.5	42	30.5	1.60	6	235	125
25	SB 25	SB 25U	SB 25UU	40	38.0	59	41.0	1.85	6	440	210
30	SB 30	SB 30U	SB 30UU	45	43.0	64	44.5	1.85	6	490	260
40	SB 40	SB 40U	SB 40UU	60	57.0	80	60.5	2.10	6	950	440

产品特性:

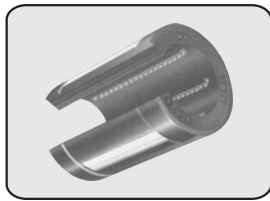
0.5° 径摆，实现静音设计

自矫正双滚道保持器设计，允许轴承在0.5° 径向摆动时，仍具有均匀分布的载荷。实现低噪音，降低磨损延长使用寿命。

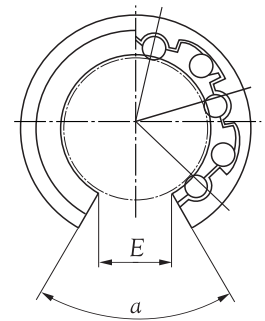
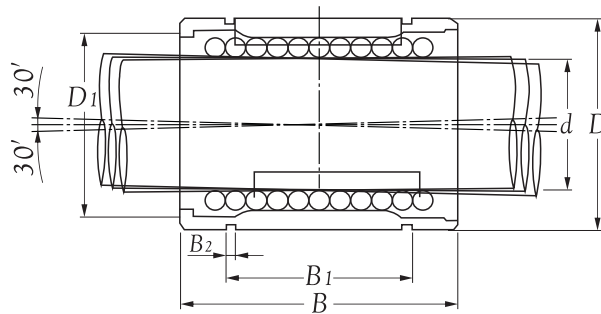
6倍高载荷，小型化经济结构

超级轴承的标准载荷 6倍于普通直线轴承。通过使用小尺寸型号的产品使机械结构的尺寸及成本降低60%以上。

SBO: Asian Super Ball Bushing



Open type



Shaft diameter d mm	without seal	Par No.		Dimensions						Angle α	No. Of Ball rows	Basic Load Ratings	
		without seal	with one seal	D	D_1	B	B_1 mm	B_2	E			Dyn. C kgf	Stat. Co
16	SBO 16	SBO 16U	SBO 16UU	28	27.0	37	26.5	1.60	11.0	60°C	4	140	77
20	SBO 20	SBO 20U	SBO 20UU	32	30.5	42	30.5	1.60	11.0	60°C	5	238	127
25	SBO 25	SBO 25U	SBO 25UU	40	38.0	59	41.0	1.85	12.5	60°C	5	444	214
30	SBO 30	SBO 30U	SBO 30UU	45	43.0	64	44.5	1.85	15.0	60°C	5	495	265
40	SBO 40	SBO 40U	SBO 40UU	60	57.0	80	60.5	2.10	20.0	60°C	5	960	450

产品特性:

0.5° 径摆，实现静音设计

自矫正双滚道保持器设计，允许轴承在0.5° 径向摆动时，仍具有均匀分布的载荷。实现低噪音，降低磨损延长使用寿命。

6倍高载荷，小型化经济结构

超级轴承的标准载荷 6倍于普通直线轴承。通过使用小尺寸型号的产品使机械结构的尺寸及成本降低60%以上。

