

# Installation & Operation Guide

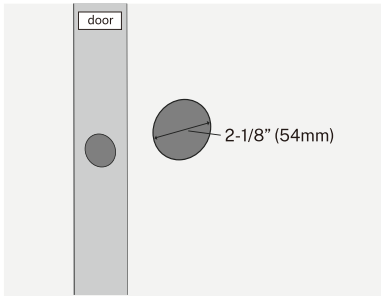
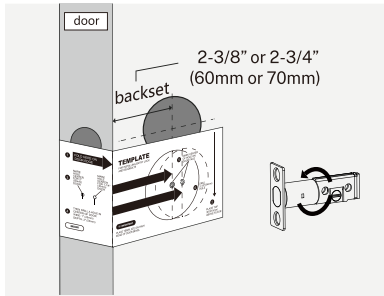
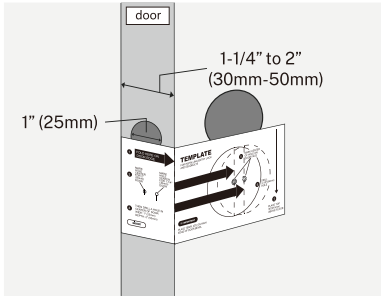
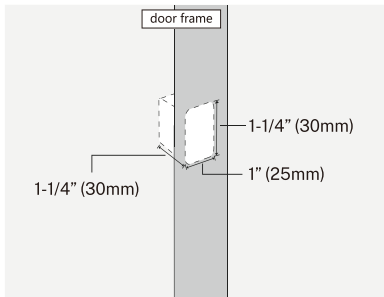
## Model:D1F

This guide contains important information about your lock. Please keep this guide

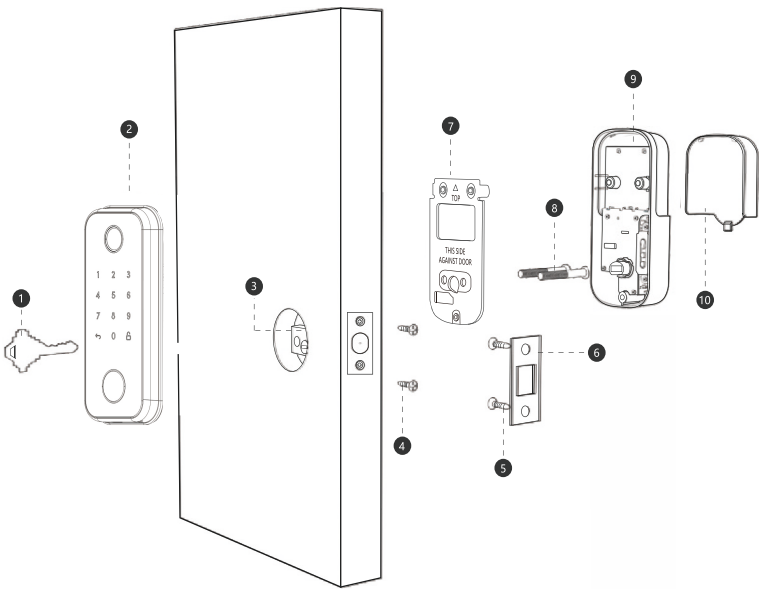
### Installation Guide

#### 1 PREPARE THE DOOR AND CHECK DIMENSIONS (with the TEMPLATE card)

- A** Measure to confirm the size of hole in the door frame. The wide is 1" (25mm), the length is 1-1/4" (30mm), the depth is 1-1/4" (30mm).
- B** Measure to confirm the thickness of door is 1-1/4" to 2" (30mm-50mm), the hole in the side of door is 1" (25mm).
- C** Measure to confirm the backset is 2-3/8" or 2-3/4" (60mm or 70mm). And adjust the length of the latch accordingly.
- D** Measure to confirm the size of hole in the door is 2-1/8" (54mm).



### Overall



- Backup Key
- Exterior Assembly
- Latch
- Screw
- Screw
- Striking Plate
- Mounting Plate
- Screw
- Interior Assembly
- Battery Cover

Tips: Specifications are subject to change without prior notice

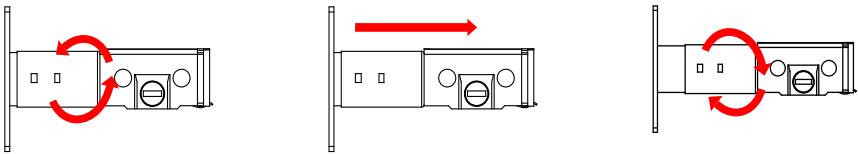
### Parts List

Backup Key A	Exterior Assembly B	Latch C	Screws for Latch/Striking Plate D
Striking Plate E	Mounting Plate F	Screws for Mounting Plate and Exterior Assembly G	Interior Assembly H
Battery Cover I	Screws for Interior Assembly J	Reset Tool K	Hole-Aligning Device L (can use or not)

### Adjustable Deadbolt Latch Set

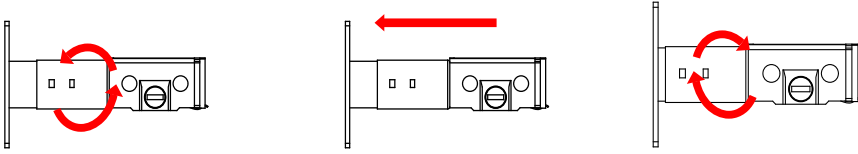
#### 1.TO CONVERT BACKSET FROM 2-3/8" (60mm) TO 2-3/4" (70mm)

a.Rotate the latch in a clockwise direction, then pull out, and twist the extension plate in an anti clockwise direction until hear a lock sound.



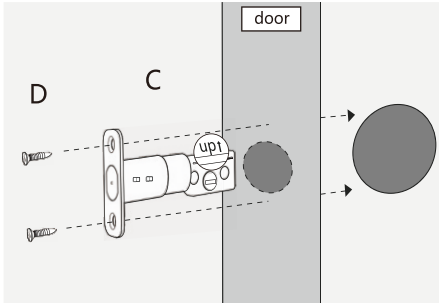
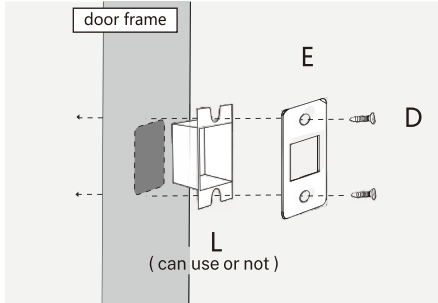
#### 2.TO CONVERT BACKSET FROM 2-3/4" (70mm) TO 2-3/8" (60mm)

a.Rotate the latch in an clockwise direction, then push in until the end, and twist the extension plate in an anticlockwise direction until hear a lock sound.

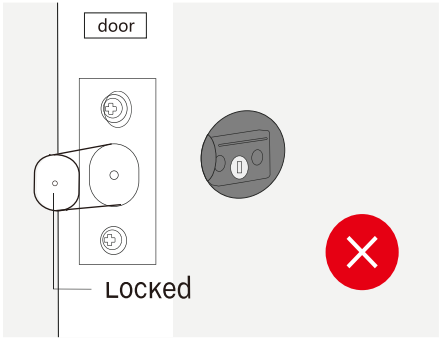
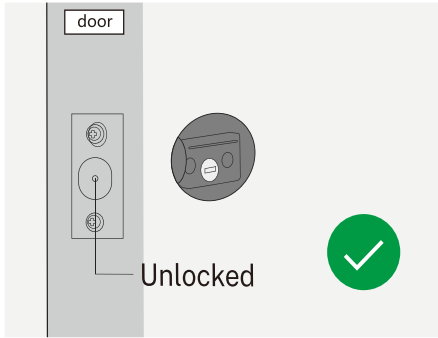


#### 2 INSTALL THE LATCH AND STRIKING PLATE

- A** Install striking plate and hole-aligning device in the door frame with two screws (D) provided.
- B** Insert latch into hole in side of door with the word "UP" up, and screw latch into door with two screws (D) provided.



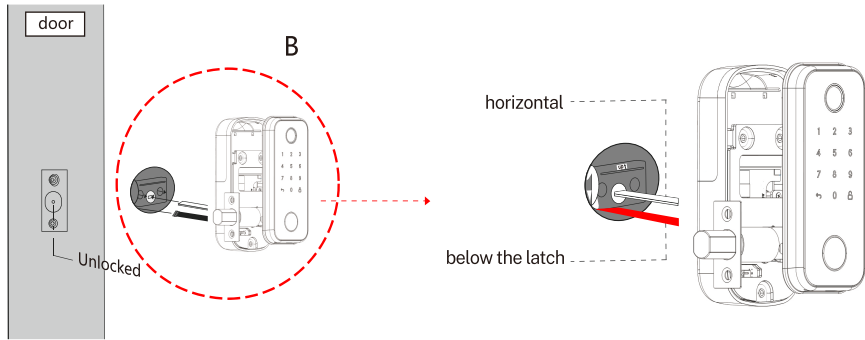
**IMPORTANT:** Please make sure the latch bolt is fully retracted (in the unlocked position) before installation.



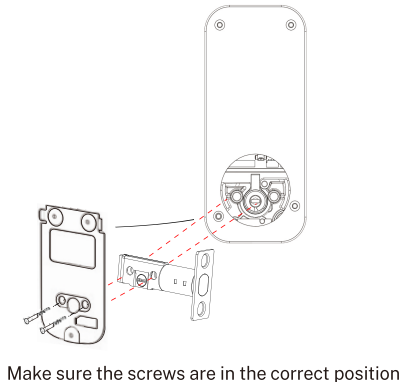
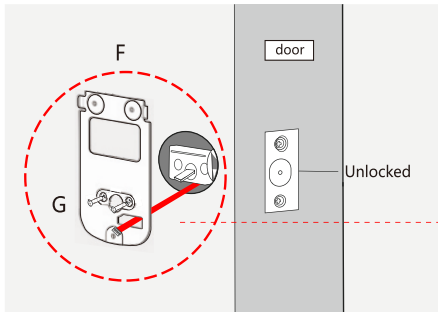
#### 3 INSTALL THE EXTERIOR ASSEMBLY AND MOUNTING PLATE

**IMPORTANT:** Please make sure the latch bolt is fully retracted (in the unlocked position) before installation.

- A** Insert torque blade horizontally through slot in the latch, and route the cable below the latch.



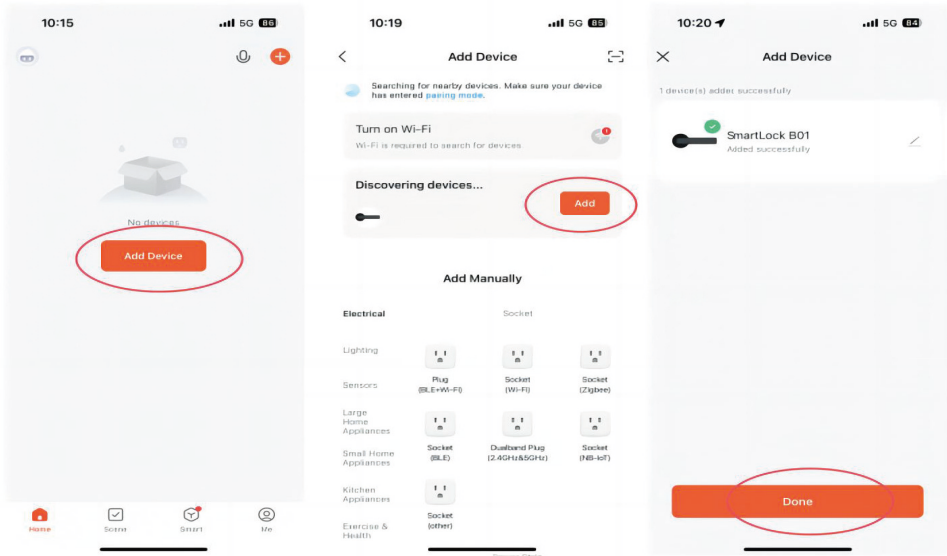
- B** Install mounting plate with two screws (G) provided.



Make sure the screws are in the correct position

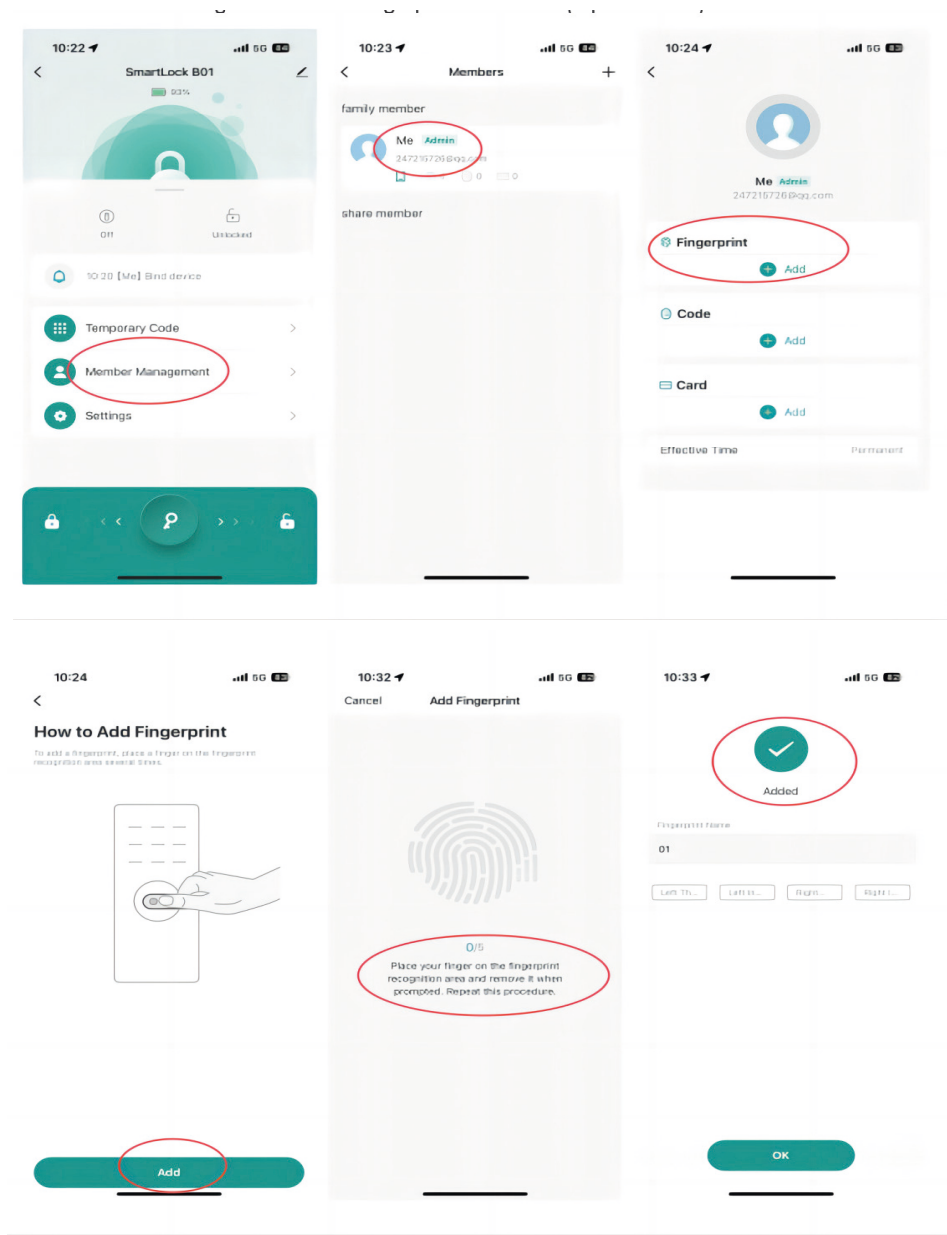
Download the APP

1. Search "Tuya Smart" in APP market, download and install Tuya APP.2. Register users  
Open the Bluetooth function of the phone, and then open the "Tuya Smart" APP on the phone to complete user registration.
3. Connect APP operation:  
When the APP is in the factory lock state, or reset to the factory state, or after the APP is unbound, before connecting the app, you need to perform the following operations:  
Open the mobile phone Tuya APP, click "Add device", adding successfully.

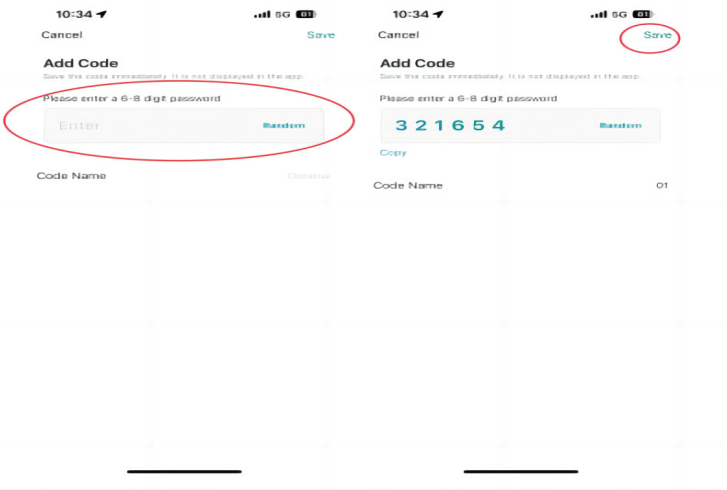
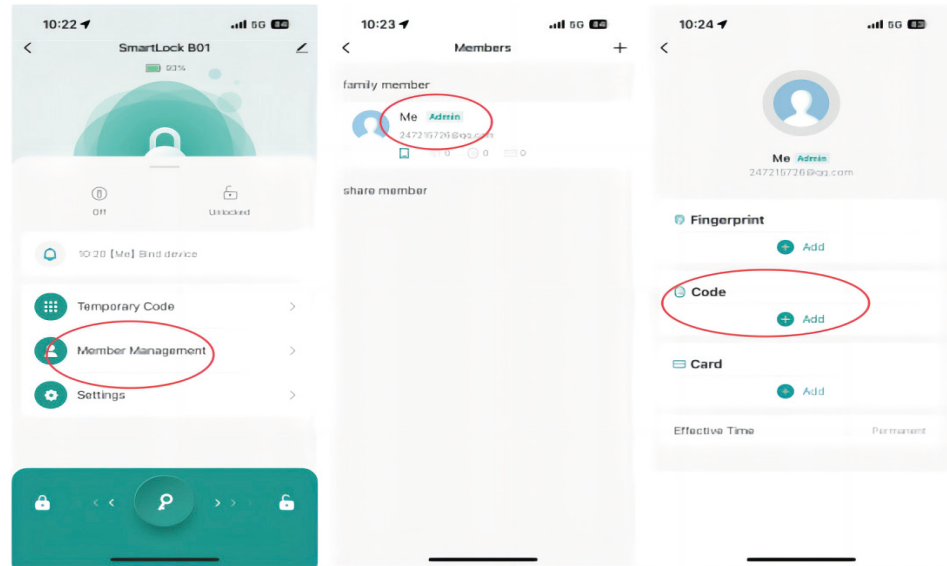


Add users(fingerprint/password)

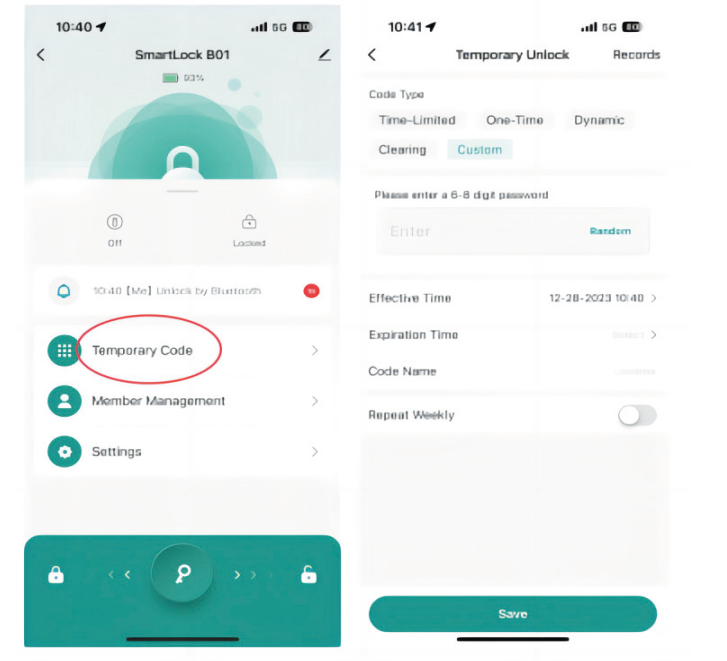
- 1) Add fingerprint  
Click Member Management -Me -Fingerprint Add -Add (Input 5 times)



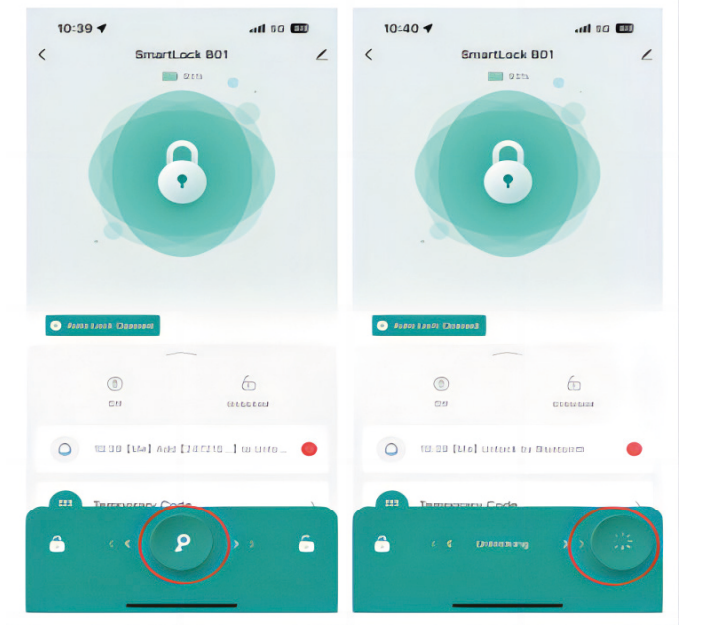
- 2).Add password  
Click Member Management-Me-Code Add -Enter 6~8 digits password -Save.



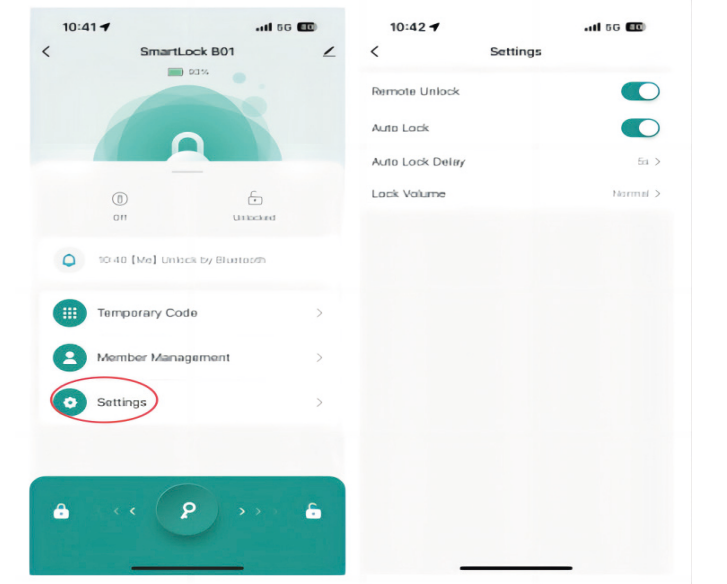
- 3).Temporary Password  
Click Temporary Code,set temporary password,Time-Limited/One-Time/Dynamic /Clearing /Custom,Click Save.



- 4).APP Unlock  
Hold the key button and slide to the right to unlock



- 5).Other function settings  
Remote Unlock:need to connect with a gateway.  
Auto Lock:,lock will be always keep unlock situation if closed.  
Auto Lock Delay:you can set the delay time by yourself.  
Lock Volume:you can select Mute or Normal.



- 6).Restore factory settingClick the button in the upper right,then click "Remove Device",to restore the factory sucessfully.